

CORPORATE EQUINE PRACTICE



Ben Jacklin MA VetMB MVetMed DipECVS MRCVS



Group Plc
Your pets, our priority

Personal Experience

- & Private Internship
- & Private first opinion practice in the UK
- & Private first opinion practice in Australia
- & University Residency (London)
- & Private referral hospital practice
- & Corporate equine practice



Oaklands Veterinary Centre

Yarm, North Yorkshire, UK

September 2015

- ⌘ 4 vet Equine (mixed) practice
- ⌘ Appalling facilities
- ⌘ Outdated and failing equipment
- ⌘ Demoralized and disengaged team



Oaklands Veterinary Centre

Yarm, North Yorkshire, UK



CVS Group Plc

- ↳ Listed Company (AIM)
- ↳ £218.1m annual turnover (2015/16)
- ↳ >4000 employees
- ↳ >1000 veterinary surgeons



CVS Group Plc

& 369 Practice Sites



& 3 Laboratories



& 7 Crematoria



CVS Group Plc

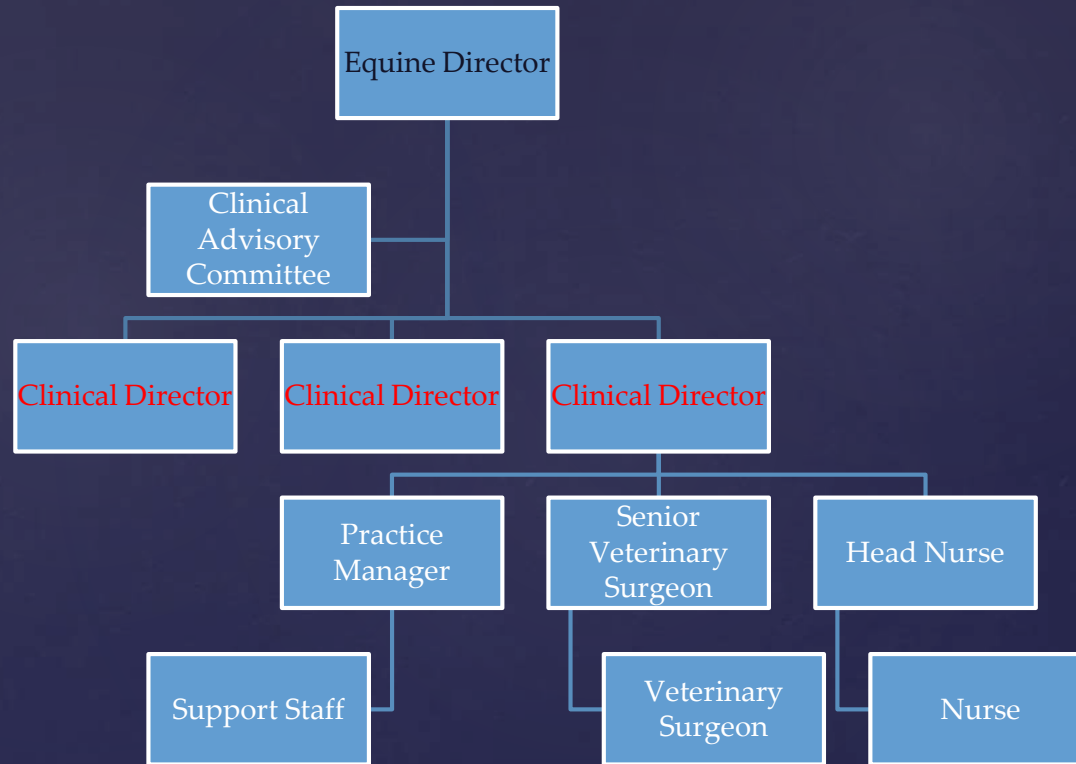
- ⌘ Instrument Manufacturer
- ⌘ Own brand pharmaceuticals
- ⌘ Own brand pet food
- ⌘ Online Pharmacy
- ⌘ Distribution warehouse
- ⌘ Own brand Insurance Division
- ⌘ Buying group



CVS Equine Division



CVS Equine Division



Advantages

- ⌘ Employee benefits and terms
- ⌘ Clinical Governance
- ⌘ Clinical Research
- ⌘ Health and Safety
- ⌘ Diverse career opportunities
- ⌘ Formal new graduate training
- ⌘ Support for undergraduates
- ⌘ Capital expenditure

Challenges

& Clinical Freedoms

& Consumer choice

& Private equity

Corporate / Private Equity



The future?

